



# REASONS

## To Use Lambdaboard® Insulation



superior long term R-value



reduces energy usage in a building



environmentally friendly & recyclable



the right choice for intelligent organs



thermoset, does not melt, drip or spread flame



moisture and wind resistant



aesthetically pleasing



high compressive strength



## INSULATING WITH LAMBDABOARD®

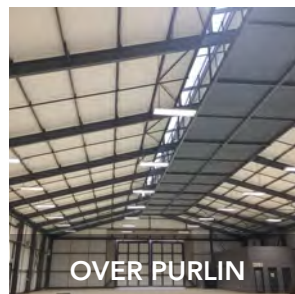
### GENERAL:

LAMBDABOARD® is a flexible faced Polyisocyanurate (PIR) insulation board made on a continuous laminator. The polyisocyanurate cored insulation uses a hydrocarbon-based blowing agent which has zero Ozone Depletion Potential (ODP) and complies with Kyoto Protocol regarding Global Warming Potential (GWP). LAMBDABOARD® insulation is the answer to HCFC and HFC free insulation.

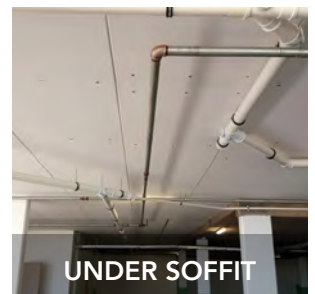
- Recyclable.
- Environmental "green" choice.
- Highest stable R-value per 25mm of thickness.
- Moisture resistant, water repellent.
- Resistant to solvents used in construction adhesives.
- Excellent dimensional stability.
- Superior performance in fire tests.
- Continuous service temperature range from -30°C to 120°C.
- Thermoset material does not soften or melt.
- High compressive strength.

### TAKE CONTROL OF YOUR ENERGY COSTS

In a bid to remain faithful to its mantra, "Take control of your energy costs", Rigifoam recently renewed its commitment to the supply of insulation capable of reducing operational heating and cooling costs resulting in positive environmental and climate change consequences. Its launch product, LAMBDABOARD®, is a unique solution to the current energy crisis.



OVER PURLIN



UNDER SOFFIT



## SPECIFICATIONS

### Facing:

\*Matt mineral coated fibre glass tissue.  
Other facings available on request : Aluminum scrim reinforced, bitumised kraft, kraft paper

### Density:

Minimum of 34kg/m<sup>3</sup> foam core, overall 40kg/m<sup>3</sup>

### Thermal Conductivity:

0.024(W/m.K) @22°C mean temperature, long term aged

### Dimensions:

Thickness : 20mm to 150mm increments of 5mm, ±1.5mm.

Width : 1220mm, ±2.5mm

Length : cut to size, ±5mm

### Temperature range: Continuous

- 30°C to 120°C

### Closed cell content:

> 95% Core

### Fire Properties:

\*SANS 428, B/B1/2/H&V – ASIB approved, report number FTC14/120. FTC09-140 and FTC08-105

### Toxicity:

Can be used in confined areas, as tested in accordance to NES 713

### Moisture absorption:

< 3% as tested in accordance with SABS 1381-1

## LAMBDABOARD® IS A UNIQUE SOLUTION TO THE CURRENT ENERGY CRISIS

There are numerous ways to install Lambdaboard®:

- Over purlin
- Vertical cladding
- Under screed
- Cavity wall
- Curtain wall / Spandrel Panel
- Ceilings
- Under soffit
- Ducting



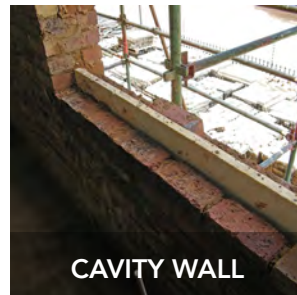
## LAMBDABOARD® HAS A STABLE R-VALUE

### R-VALUE PERFORMANCE

LAMBDABOARD® has the highest R-value per 25mm thickness, therefore the design U-value of the insulation system can be achieved with a minimum thickness. This in turn allows the overall footprint of the building to decrease and reduces the cost of construction.

LAMBDABOARD®	
Thickness (mm)	R Value (m <sup>2</sup> .K/W)
25	1.04
30	1.25
40	1.67
50	2.08
60	2.50
80	3.33
100	4.17

## LAMBDABOARD® IS A PRODUCT THAT IS RENOWNED FOR ITS UNMATCHED INSULATING SUPREMACY



CAVITY WALL



UNDER PURLIN

- Environmentally friendly
- Low carbon emissions
- Controlled temperature environment
- Savings on energy costs
- Long term insulation properties
- Installed "R" value

REV:01

Email: [info@roofinsulation.co.za](mailto:info@roofinsulation.co.za)  
[www.roofinsulation.co.za](http://www.roofinsulation.co.za)

**DISAVOWAL:** The customer acknowledges and understands that after delivery, the goods shall have left the control of Rigifoam, and that he/she shall be responsible for the unpacking of and connection/installation of the goods. The customer acknowledges that it is his/her further responsibility to ensure that a fully qualified and competent person is used to install the goods to ensure their effective operation. Failure by the customer to ensure the installation of the goods according to the written instructions of manufacturer and/or supplier, by a fully qualified and competent person, may result in the failure of the goods, injury, loss or damages to the customer. Accordingly, and in this event, Rigifoam accepts no responsibility for any loss or damages that might arise by reason of death or personal injury to any person engaged in the installation or use of the goods thereafter subject to the provisions of the Consumer Protection Act 68 of 2008.

Head Office: 012 800 3606  
Web: [www.roofinsulation.co.za](http://www.roofinsulation.co.za)  
Email: [info@roofinsulation.co.za](mailto:info@roofinsulation.co.za)